

From AI Guidelines to Teacher Training

Senior lectures Janne Länsitie & Lotta Pakanen

Oulu university of Applied Sciences

School of Professional Teacher Education

Who is responsible?

What can we use?

Acquiring new tools?

**We knew it was coming last autumn
but almost everything was open...**

Updating curriculums?

What happens to learning?

IT guidelines?

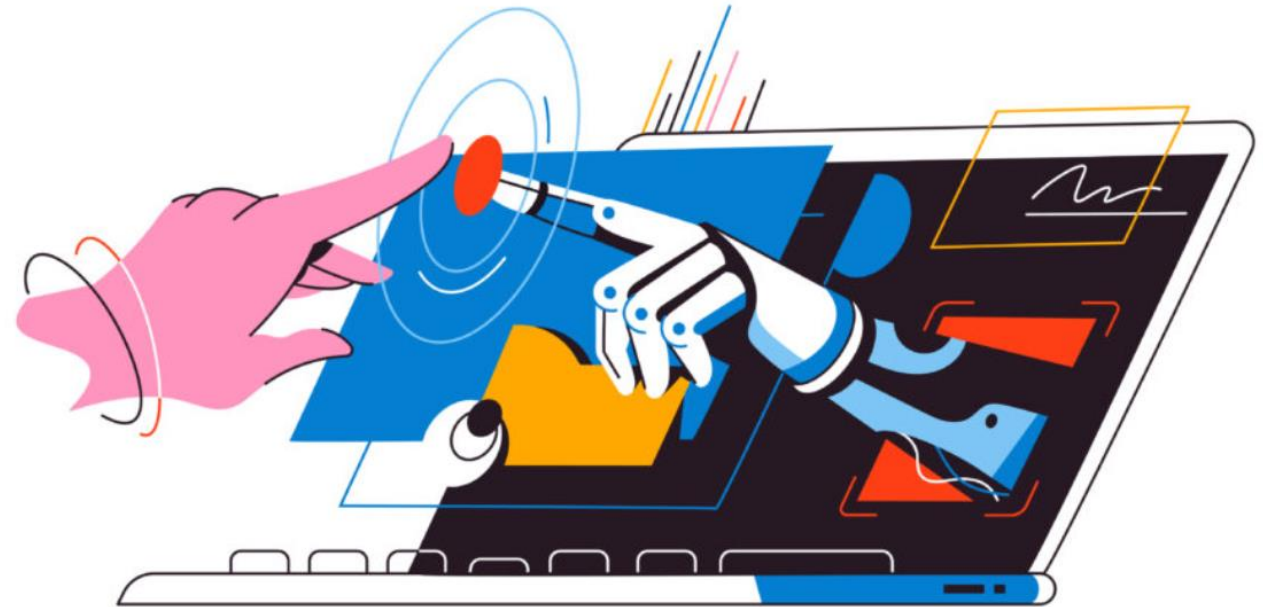
Training teachers?

National working group

ARENE - The Rectors' Conference of Finnish Universities of Applied Sciences

https://arene.fi/wp-content/uploads/PDF/2023/AI-Arene-suositukset_EN.pdf?t=1686641192

- Recommendations created between early 2023-Spring 2023
- Recommendations approved in all Finnish UAS
- Applied into guidelines by most UAS schools by summer-autumn 2023





The use of artificial intelligence does not need to be reported: Students can use AI to create works without notice. However, students must take good scientific practices and responsibility into account.

This option is a good choice when the teacher wants to enable students to use AI freely without restrictions.

The use of artificial intelligence is permitted, but it must be reported: Students are allowed to use artificial intelligence to create works, but they must clearly indicate this.

This option is a good choice if you want to enable students to use AI and also want to ensure that the students understand the limitations of using AI and can explain how they have used it.

The use of artificial intelligence is not allowed: Students are not allowed to use artificial intelligence to create the content of works without separate permission or approval. However, artificial intelligence may be used for brainstorming, planning and proofing.

This option is good if it is not desired to allow the use of AI in a specific course or assignment, or if the teacher wants to ensure that students learn skills and knowledge manually without the ease of using AI.

Local Oamk guidelines

To put its artificial intelligence policy into practice, **Oamk will ensure teachers' competence and provide training to support the use of artificial intelligence in teaching**

1. Oamk encourages the responsible use of artificial intelligence. **Artificial intelligence is an important workplace skill, which is why its use in studies is usually allowed.** Deviations from this policy can be made in individual courses on justified grounds.

2. **Students cannot be obliged to use artificial intelligence if the artificial intelligence application is not one supported by the educational institution.** Moreover, students cannot be required to personally conclude an agreement with a third party or to pay for applications.

3. Students are personally responsible for the content of the text or other output they produce. Artificial intelligence does not pay attention to ethical considerations and is not a source of scientific texts. Applying artificial intelligence requires critical thought and media literacy.

4. When supervising and assessing students, teachers must keep the focus on students' real competence and its development. At the outset of the course, **the coordinating teacher informs the students about the principles, advantages and challenges related to the use of artificial intelligence, as well as of any restrictions if required.**

5. Artificial intelligence applications must be used in line with Oamk's information security policy

Oamk will ensure teachers' competence and provide training to support the use of artificial intelligence in teaching

When supervising and assessing students, teachers must keep the focus on students' real competence and its development

...teacher informs the students about the principles, advantages and challenges related to the use of artificial intelligence, as well as of any restrictions if required.

Teacher training based on guidelines

Webinars for whole university since Jan 2023

Optional 3 ects course for teacher training

Pedagogical training (digital badges)

Topic based on demand training for small teams

Events provided by partners such as Microsoft

Open access course for staff and students



Tekoäly

OAMK

From AI Guidelines to Teacher Training

Janne Länsitie janne.lansitie@oamk.fi & Lotta Pakanen lotta.pakanen@oamk.fi

Oulu university of Applied Sciences

School of Professional Teacher Education