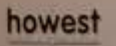


THE

REEF

Training Lab Blue Energy



20-21 June

#MandL24

conference.media-and-learning.eu



Slides 2 is withdrawn by the author

Endorsed by



Co-funded by the European Union. Views and opinions expressed are however those of the author(s) only and do not necessarily reflect those of the European Union or European Education and Culture Executive Agency (EACEA). Neither the European Union nor the granting authority can be held responsible for them.



THE REEF

Bluebridge - Oostende

- Specialised VR/AR training lab for innovative training in the Blue Energy sector, preparing companies and employees for the challenges of the offshore energy transition.
- Innovative training modalities at every possible training level - academic/technical/practical
- Goal: students, workers and companies evolve along with technological developments in blue energy/economy.

Investment & exploitation

- ERDF/EFRO project UPSKILL
- POM West Flanders
- Implementation by consortium
 - Syntra West
 - Universiteit Gent
 - Howest
 - Hogeschool Vives



Marine energy transition

- New Princess Elisabeth zone
- Growing sector
- Need for personnel
- Digital and technical competences
- Immersive technologies





Showcase training

- Demo linked to relevant topics regarding Blue Energy
- Sector branding
- Showing possibilities infrastructure

Digital Twin North Sea



Control room



POM
West-Vlaanderen

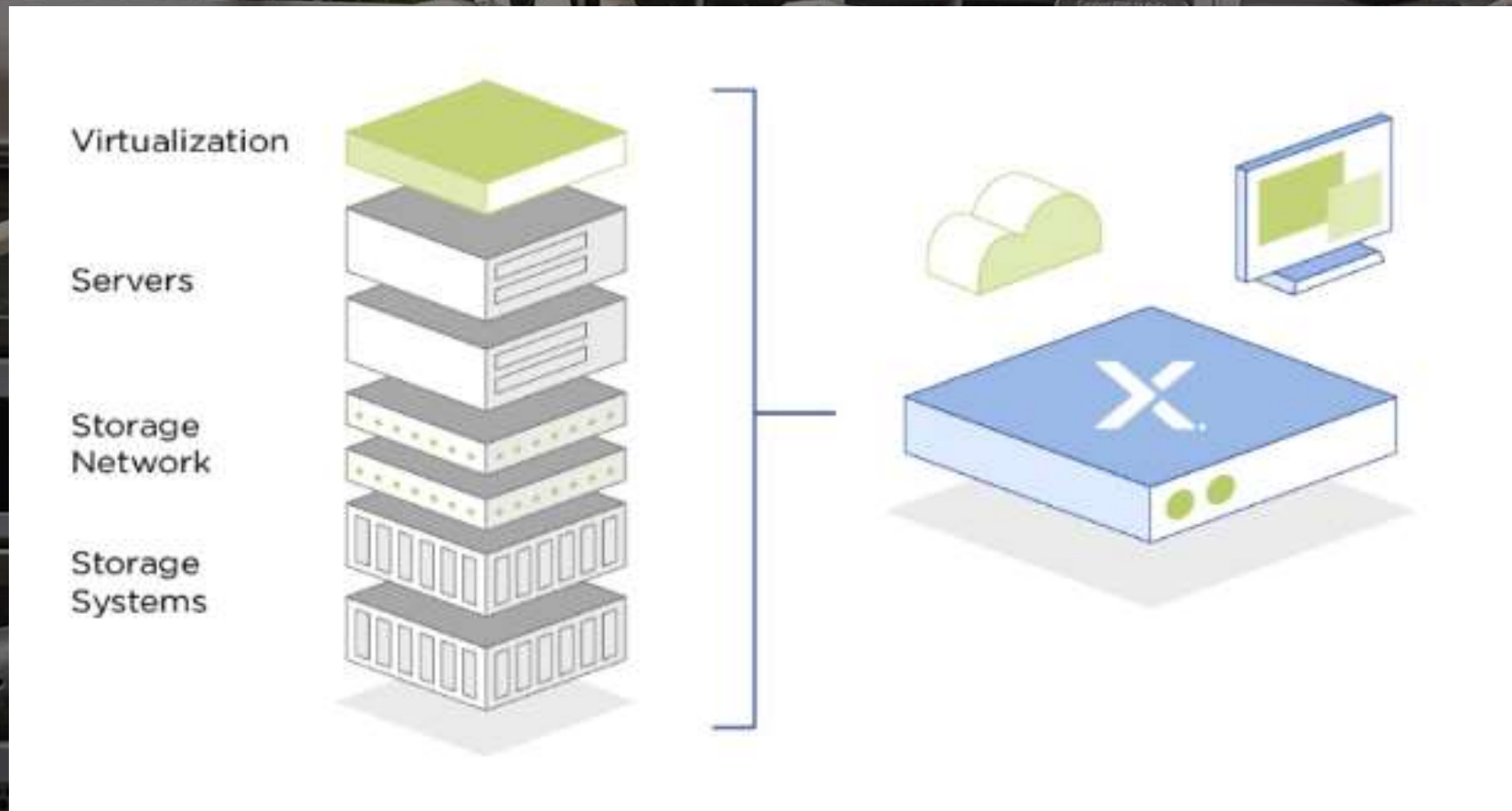
VR Cave



VR Playzone



Powerful HCI cluster



Recording equipment



Insta 360 Titan with FarSight Remote

- 360° (VR Livestreaming)
- 8 Fisheye lenses
- 10K 3D (30fps)
11 K 3D (photo)

Recording equipment

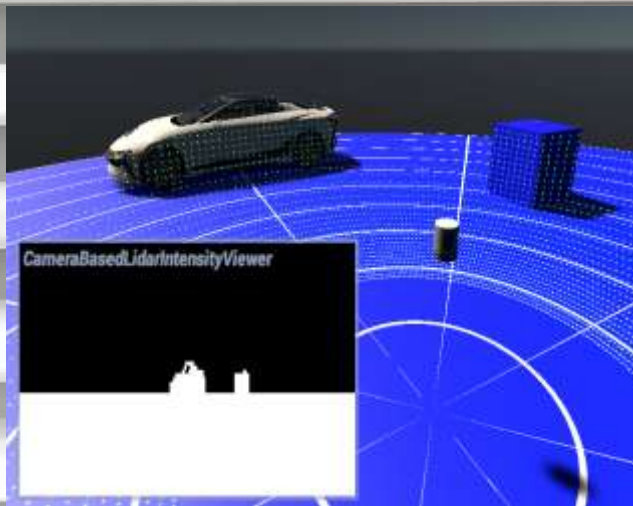


NavVis VLX 2 scanner

- 4 Fisheye lenses
- 2 Lidar scanners

Scan to BIM

Recording equipment



Apple iPad Pro LiDAR module - Principle

(Source: Apple iPad Pro LiDAR Module structural, process & cost report, System Plus Consulting, 2020)



The VCSEL and the DOE project a dot matrix of 9 x 64 dots.



MobileReviewsEh - Courtesy of ItzTube, 2020

The SPAD NIR CIS sensor measures the distance between the iPad and the 9x64 dots and the processor creates the map of the environment.



Courtesy of Apple, 2020



Using The Reef

- 80 % by consortium and government agencies
- 20 % commercial
- Partnerships



More info

www.the-reef.be

Linkedin: the-reef-training-lab

Ruth.Teerlynck@syntrawest.be

Pieter.Schutijser@vives.be

THE
REEF

