



**Building common ground**

**Future challenges for  
Centres for Teaching and Learning**

**Alexandra Mihai, PhD  
Maastricht University**











UNIVERSAL STUDIOS®

SCENE	TAKE	ROLL

DATE  
PROD.CO.  
DIRECTOR  
RAMAN

STORY BOARD



# Three models

- Integrated CTLs



- Separate entities



- Hybrid setup



# Integrated CTLs



Bringing various teams (incl. ed tech support) under the same roof

Grown organically or by merger

Pedagogical & technical support

**Pro:** Cross-pollination opportunities

**Con:** Different work cultures (training vs development mentality)

The challenge of communication



# Worlds apart

CTL focuses solely on pedagogical support  
Staff: academics and educational developers  
Educational technology support- in a different unit (often in another part of the university)

**Pro:** Clear division of labour  
**Con:** Not many synergies (outside Covid)  
Difficult for faculty to access comprehensive support



# Different flavours



Logistical/ infrastructure technology support-  
in IT department

Pedagogical support & innovation with  
technology- in CTL

**Pro:** more potential to use technology to  
enhance the learning process

**Con:**

Not very transparent division

Accountability to different parts of university

Potential for miscommunication

# Online education

Online education is in most cases in a totally separate space

(often within Executive/ Continuous Education units)

**Pro:** focus on specific learning design for online learning & access to multimedia resources

**Con:** functioning in isolation both from CTLs and ed tech units (missing potential synergies)



# Activity 1 (15 min)

1. In **small groups** discuss:

- Which **model** (or adaptation of it) does your university have?
- What are the biggest **challenges** you/ your university are facing in terms of pedagogical & ed tech/ online education support?

2. **Sharing** reflections in plenary

RETAIL /  
F&B /  
ACTIVITY

# COMMON GROUND

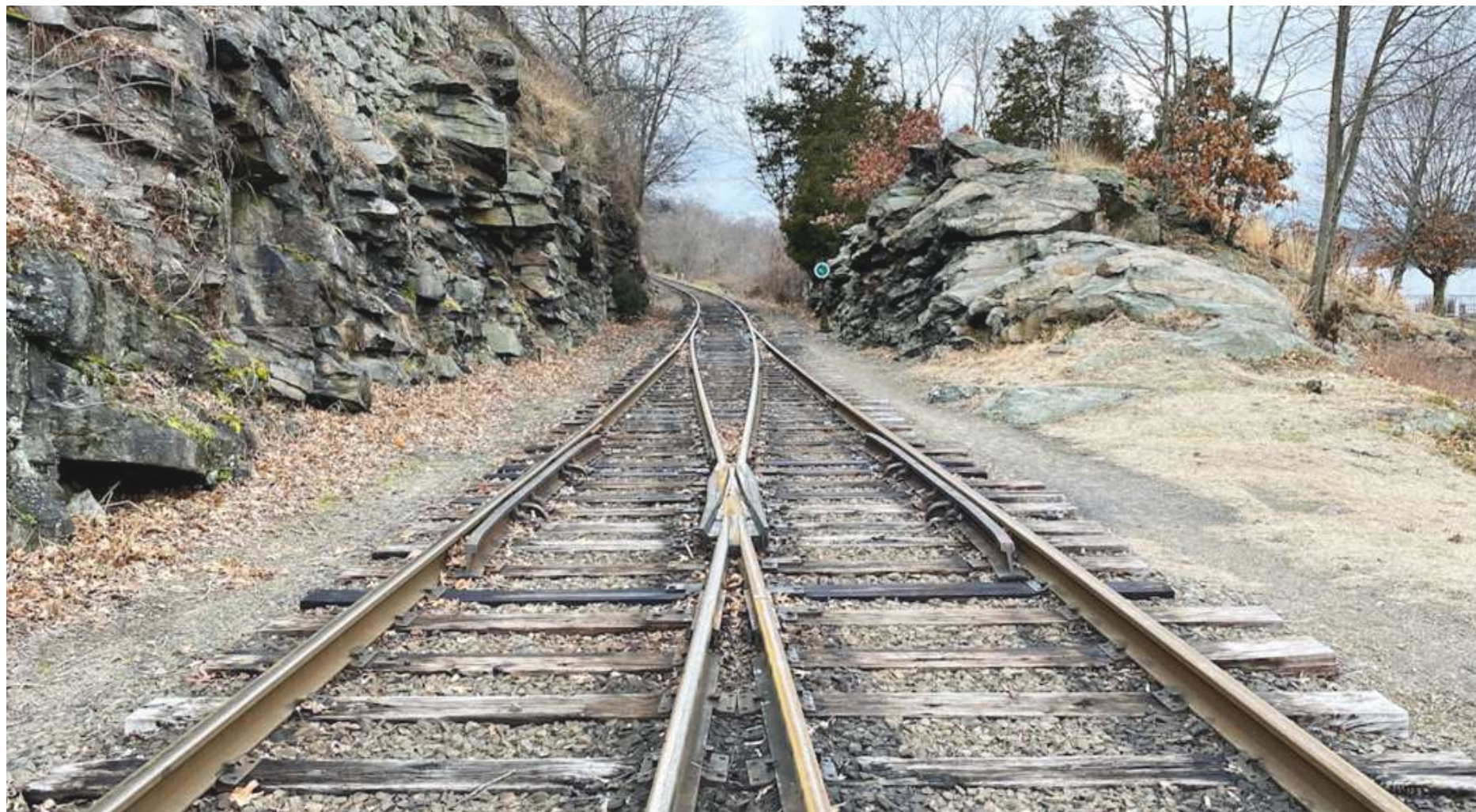
200

RETAIL /  
F&B /  
ACTIVITY



199





# Building common ground...

- Don't be afraid to cross boundaries
- Create space(s) & make time- intentionally!
- Build a common work culture
- Learn from each other
- Communicate & network effectively



## Activity 2 (25 min)

**3 scenarios-** each group works on one of them

**Task:** come up with a 5 point strategy to ensure/ enhance coherence for faculty support in your context/ scenario

**Scenario 1:** You are setting up a **new CTL** at your university (with limited resources) and you need to design the interplay between pedagogical and ed tech support.

**Scenario 2:** Your university decides to **merge the CTL (mainly pedagogical support) with the ed tech unit** (currently in the IT department). What are the main things to keep in mind?

**Scenario 3:** Your university has **separate entities** for ed tech and pedagogical support but they **worked very well together during the pandemic**. Now everyone is back in their silos. What would you do?

# Let's discuss

The background image shows a modern, minimalist interior. On the left, a curved staircase with light-colored steps and a dark wooden handrail leads upwards. To the right, a large window with vertical blinds allows natural light to filter into the room. The overall atmosphere is bright and airy.

Briefly present your strategies for each scenario

Reflections

Discussion

Questions?

**Thank you!**



Get in touch:

Email: [a.mihai@maastrichtuniversity.nl](mailto:a.mihai@maastrichtuniversity.nl)

Blog: <https://educationalist.eu/>

Newsletter: <https://educationalist.substack.com/>