

# KU Leuven and GenAI: it takes many to tango

Prof. Tine Baelmans

# Opening dance



Fesshole 🇺🇸  
@fesshole



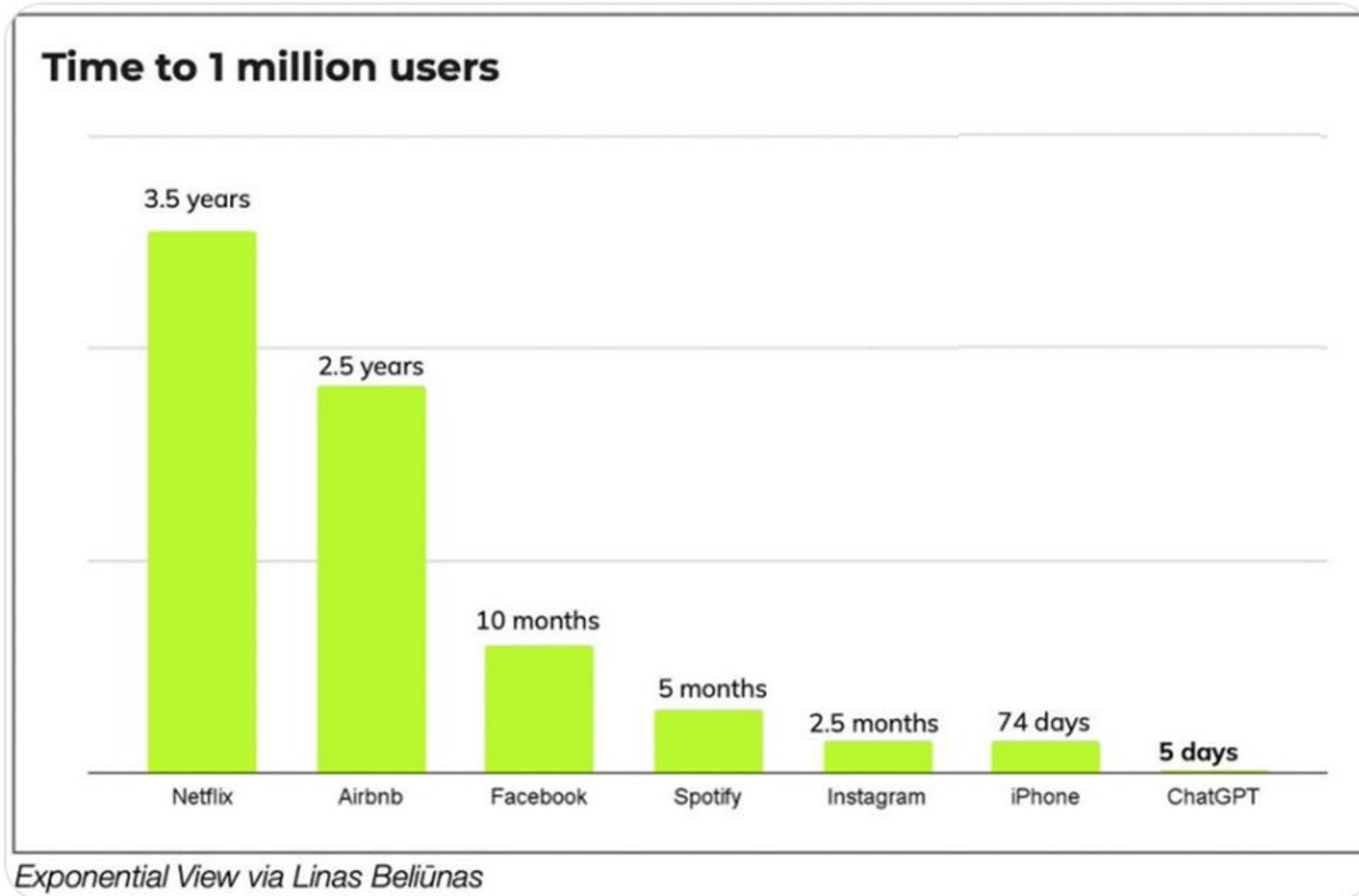
04/22

# Expert panel of irregularities meeting



10/22

# ChatGPT launch



2.5 months



Instagram

74 days



iPhone

5 days

ChatGPT

12/22

# Writing group KU Leuven guidelines





02/23

# KU Leuven GenAI guidelines



05/23

# Intensified collaboration

Network Education  
& Network Research

Research Policy Council & Research  
Support Network (NeOn)

**Legal services**

**KU Leuven  
Libraries**

**ICTS**

KU Leuven  
Learning Lab

**Teaching  
&  
learning services**

**Research  
Coordination  
Office**

Leuven.AI



07/23

# Policy priorities GenAI

## AI-based tools



MS CoPilot



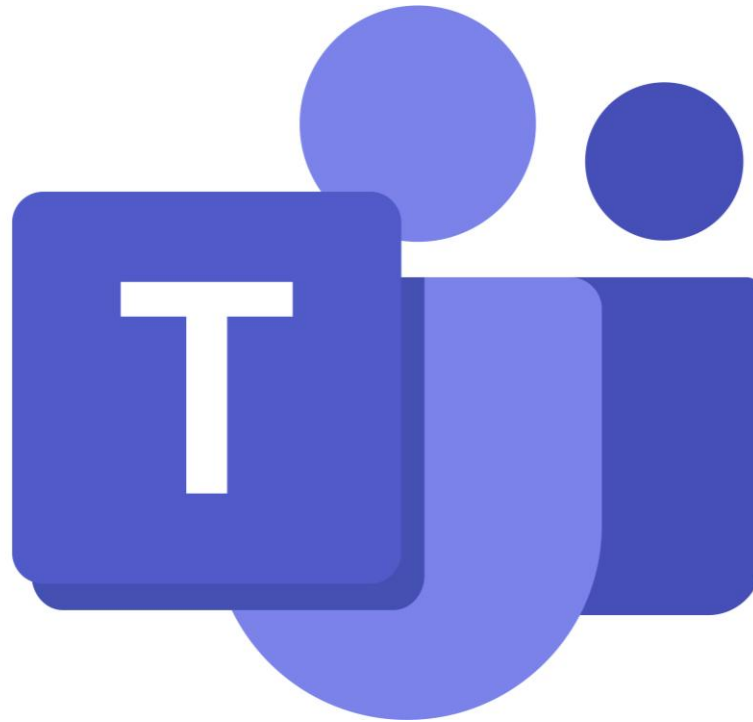
Blackboard AI Design Assistant

## Support & training



[kuleuven.be/genai](https://kuleuven.be/genai)

## Support & training



GenAI Teams channel

## Support & training



Events for staff



00:22

Dial pad

Hold

Transfer

Chat

People

View

Apps

More

Camera

Mic

Share

Leave



12:45  
3/12/2024  
ENG

01/24

# Policy priorities GenAI

## Support & training



Student sessions

01/24

# Policy priorities GenAI

## Support & training



Student GenAI code of conduct



GenAI assistance used as/for:	Name of the GenAI tool(s) used. If helpful, also describe in which way you were using GenAI related to what is specified as code of conduct.	Code of conduct:
As a language assistant for reviewing or improving texts I wrote myself		<p>This use is similar to using spelling and grammar check tools. In general, you do not have to refer to such kind of GenAI use in the text.</p> <p><b>However, be careful:</b></p> <ul style="list-style-type: none"> <li>- When using GenAI tools on texts you did not write yourself to improve the text, <b>you have to <a href="#">refer</a> to the original source or author</b>, otherwise you are committing <a href="#">plagiarism</a> and thus an irregularity.</li> </ul>
As a paraphrasing tool		<p>This use is allowed except when it is prohibited by the teacher or the program of study. You may paraphrase your own text or texts by an author other than yourself and take inspiration from what a tool or another tool suggests (unless it is not allowed). In general, you do not have to refer to such kind of GenAI use or paraphrasing tools in the text.</p> <p><b>However, be careful:</b></p> <ul style="list-style-type: none"> <li>- If it entails text by an author other than yourself, <b>you are not allowed to include that paraphrased text without <a href="#">reference</a> to the original source or author</b>. Without such reference, you would be committing <a href="#">plagiarism</a> and thus an irregularity.</li> </ul>
For translation aid to improve texts I wrote myself or to better understand text from others		<p>This use is allowed except when it is prohibited by the teacher or the program of study. It is similar to using translation tools (Google translate, DeepL, ...). In general, you do not have to refer to such kind of GenAI use in the text.</p> <p><b>However, be careful:</b></p> <ul style="list-style-type: none"> <li>- <b>You are not allowed to include that translated text without <a href="#">reference</a> to the original source or author</b></li> </ul>

Version academic year 2025-2026  
To be approved by the Academic Council



**GenAI assistance used as/for:**

**Name of the GenAI tool(s) used.**

If helpful, also describe in which way you were using GenAI related to what is specified as code of conduct.

GenAI assistance used as/for:	<b>Name of the GenAI tool(s) used.</b> If helpful, also describe in which way you were using GenAI related to what is specified as code of conduct.
<b>As a language assistant for reviewing or improving texts I wrote myself</b>	
<b>As a paraphrasing tool</b>	
<b>For translation aid to improve texts I wrote myself or to better understand text from others</b>	

GenAI assistance used as/for:	Name of the GenAI tool(s) used. If helpful, also describe in which way you were using GenAI related to what is specified as code of conduct.	Code of conduct:
As a language assistant for reviewing or improving texts I wrote myself		<p>This use is similar to using spelling and grammar check tools. In general, you do not have to refer to such kind of GenAI use in the text.</p> <p><b>However, be careful:</b></p> <ul style="list-style-type: none"> <li>- When using GenAI tools on texts you did not write yourself to improve the text, <b>you have to <a href="#">refer</a> to the original source or author</b>, otherwise you are committing <a href="#">plagiarism</a> and thus an irregularity.</li> </ul>
As a paraphrasing tool		<p>This use is allowed except when it is prohibited by the teacher or the program of study. You may paraphrase your own text or texts by an author other than yourself and take inspiration from what a GenAI tool or another tool suggests (unless it is not allowed). In general, you do not have to refer to such kind of GenAI use or other paraphrasing tools in the text.</p> <p><b>However, be careful:</b></p> <ul style="list-style-type: none"> <li>- If it entails text by an author other than yourself, <b>you are not allowed to include that paraphrased text without <a href="#">reference</a> to the original source or author</b>. Without such reference, you would be committing <a href="#">plagiarism</a> and thus an irregularity.</li> </ul>
For translation aid to improve texts I wrote myself or to better understand text from others		<p>This use is allowed except when it is prohibited by the teacher or the program of study. It is similar to using translation tools (Google translate, DeepL, ...). In general, you do not have to refer to such kind of GenAI use in the text.</p> <p><b>However, be careful:</b></p> <ul style="list-style-type: none"> <li>- <b>You are not allowed to include that translated text without <a href="#">reference</a> to the original source or author</b></li> </ul>



Improve self-generated text  
Search





Translate

Paraphrase

Code

Generate multimedia



Unacknowledged copying

01/24

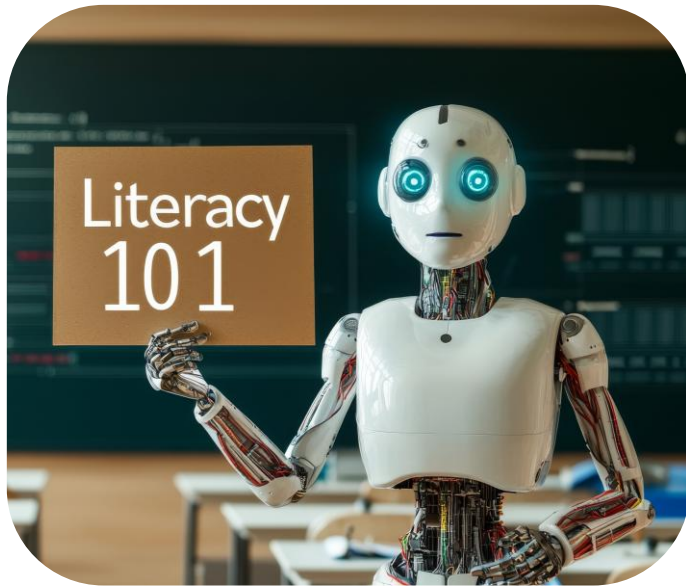
# Policy priorities GenAI

## Support & training

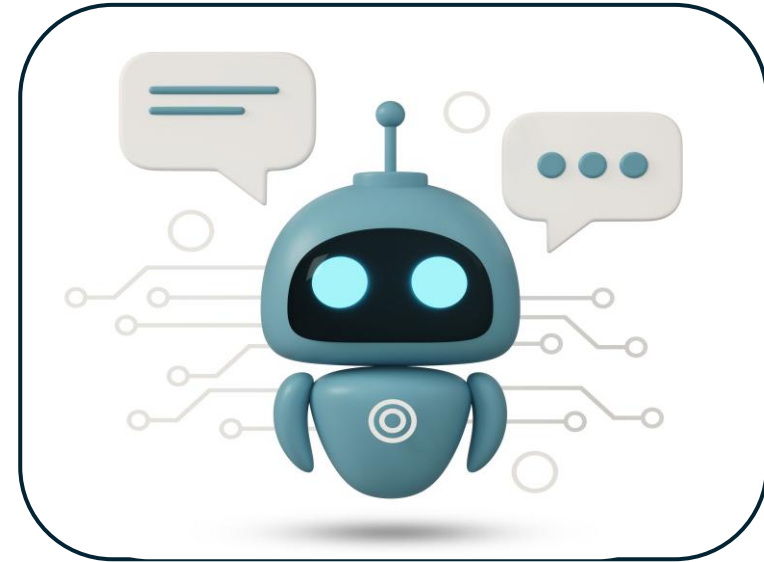


Student GenAI code of conduct

## Support & training



AI literacy  
user community



Chatbots  
user community

## Intervision learning network



01/24

# Policy priorities GenAI

## Expert Committee GenAI





01/24

# Policy priorities GenAI

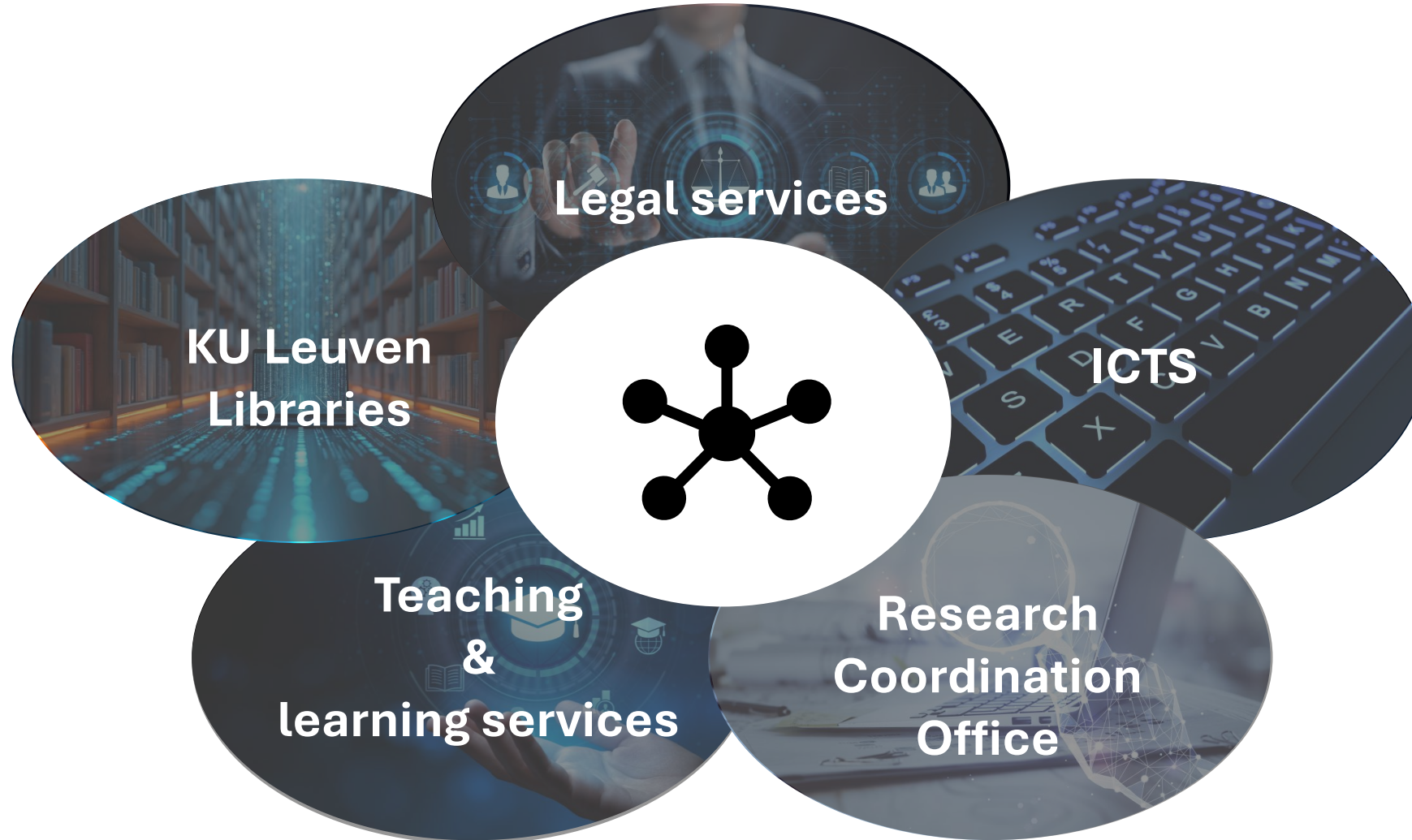
## Expert Committee GenAI



01/24

# Short-term priorities

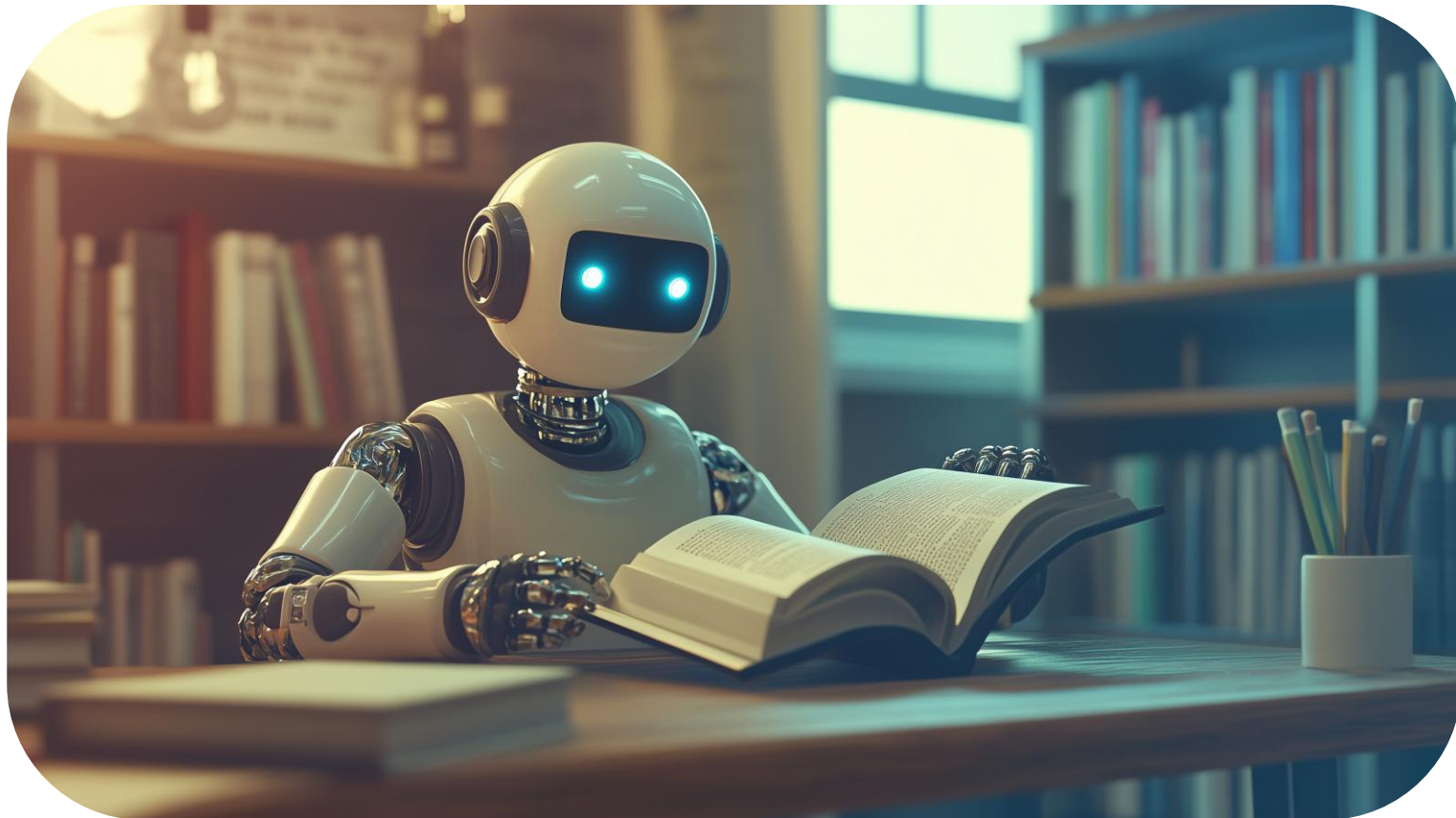
## GenAI Coordination Team



06/25

# Short-term priorities

Vision master's thesis & AI literacy curriculum



06/25

## Short-term priorities

Mapping implications AI Act





06/25

## Short-term priorities

Inform on copyright & GenAI





06/25

# Short-term priorities

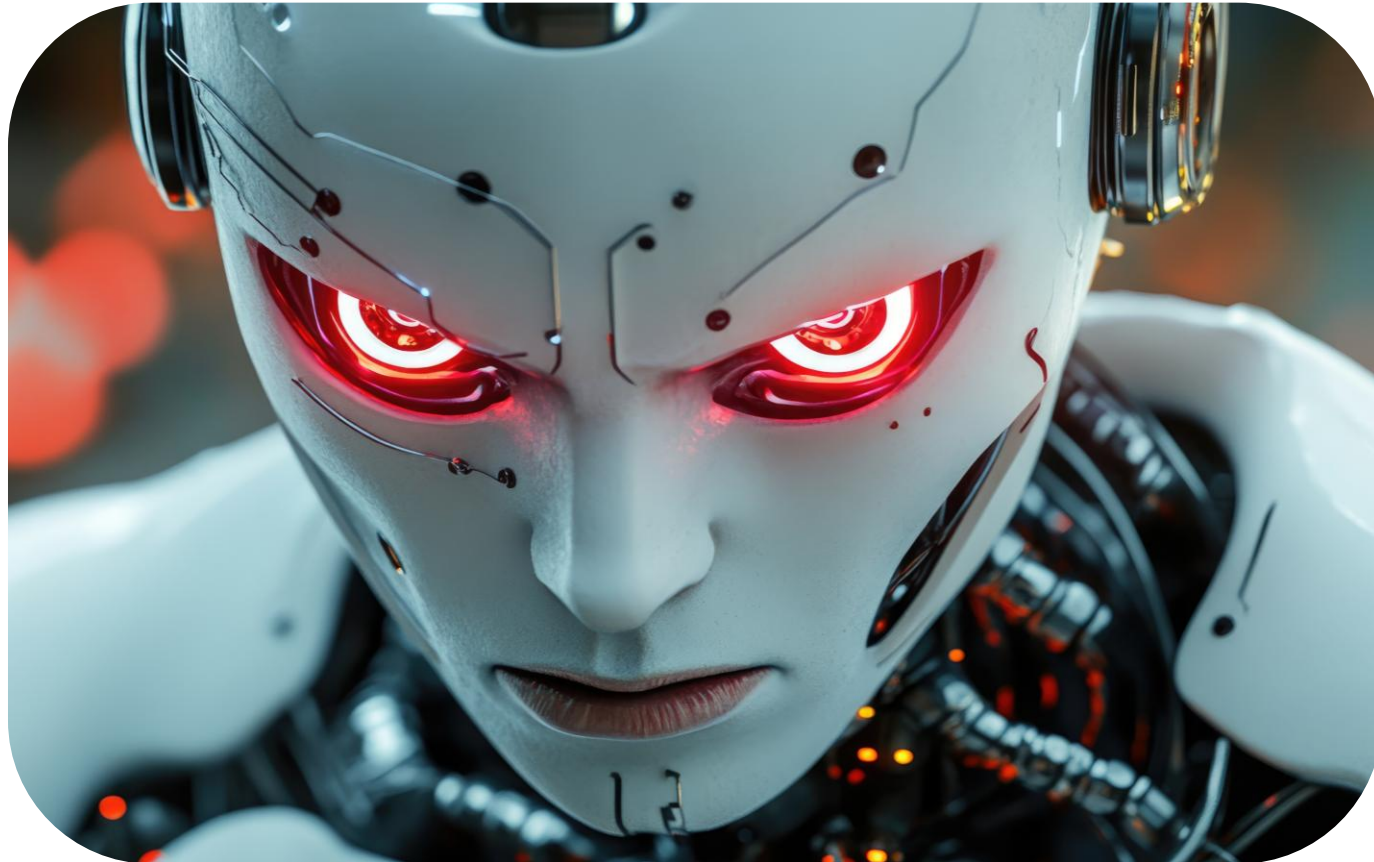
## AI Team



06/25

# Challenges

Security risk & ethical impact



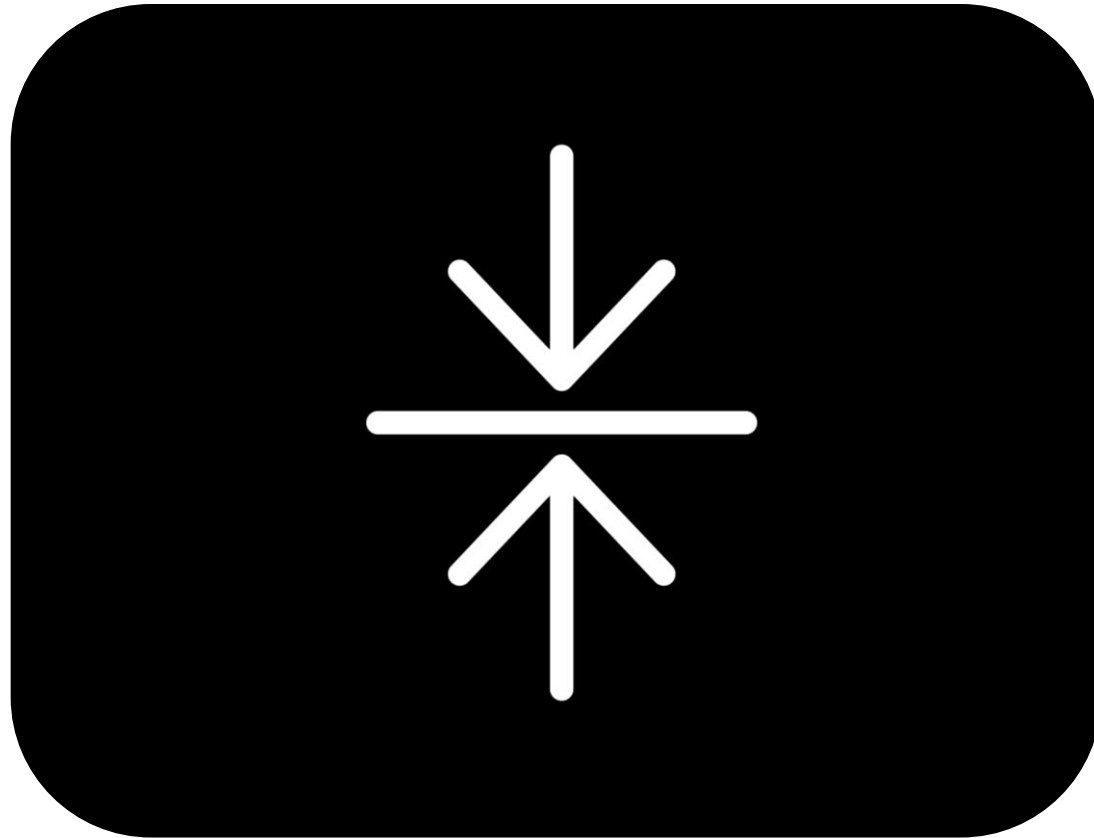
06/25

# Challenges

## Environmental impact



## Alignment

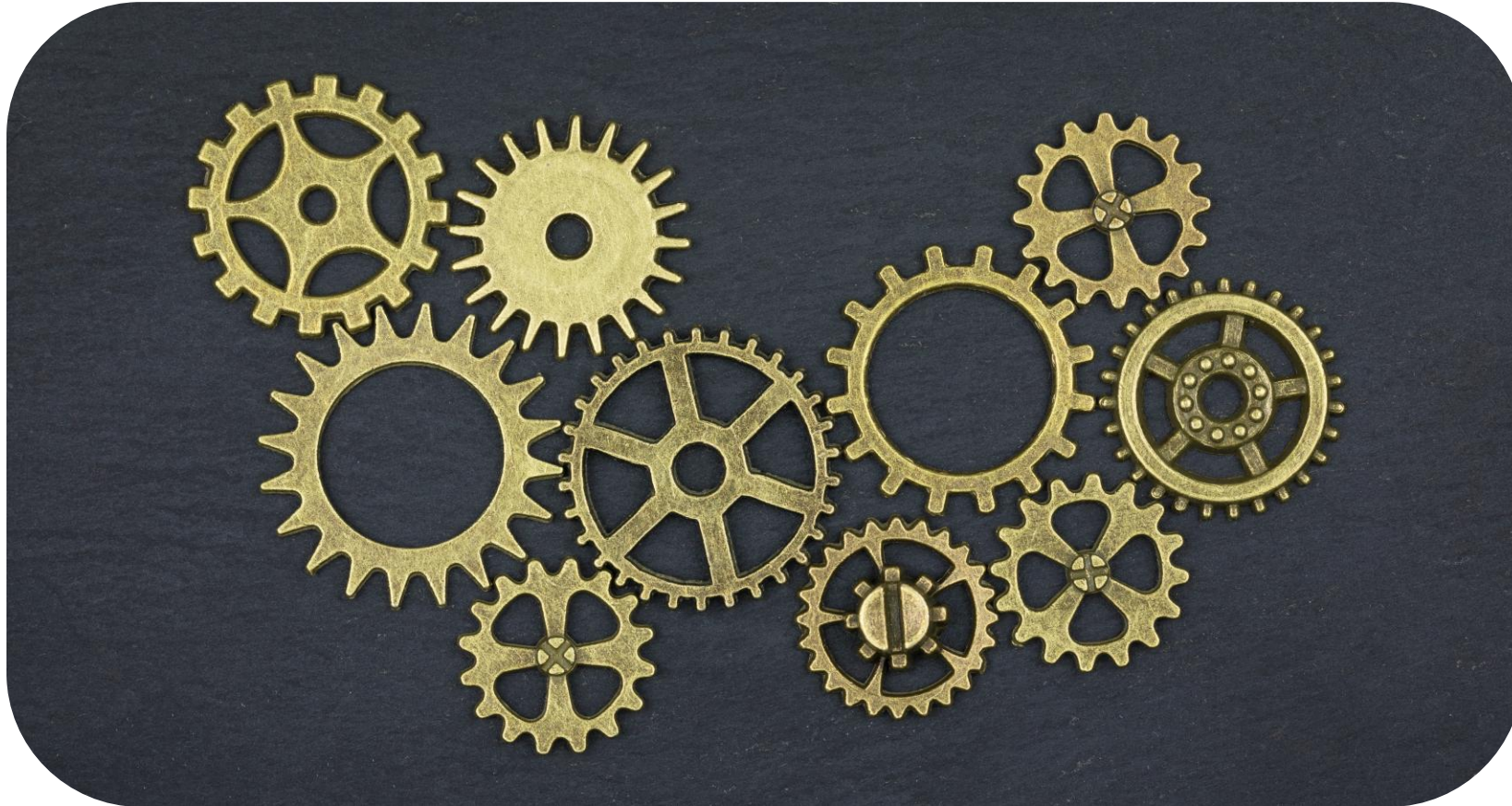




06/25

# Challenges

Reprioritize resources/capacity





06/25

# Challenges

## Bridging the AI gap



06/25

# Challenges

Safe-guarding core knowledge & skills





# Thank you!